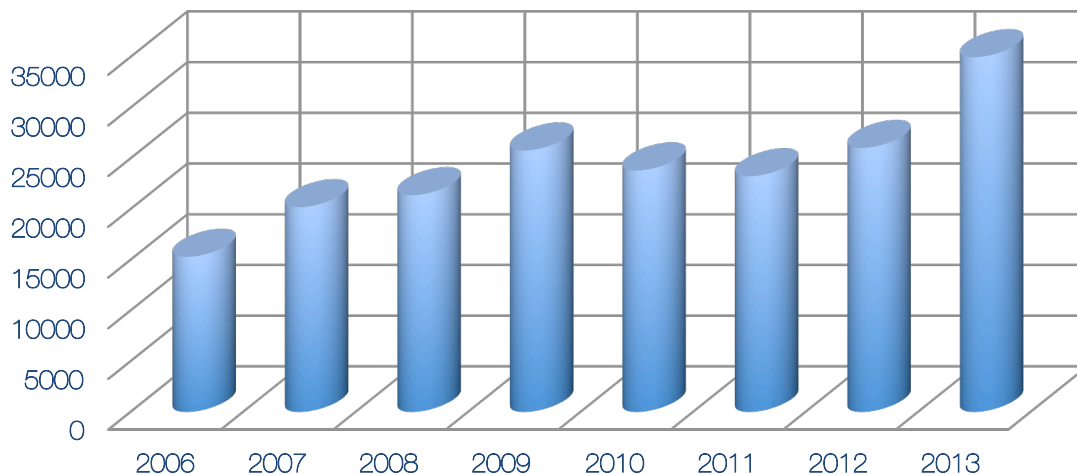


Survey overview

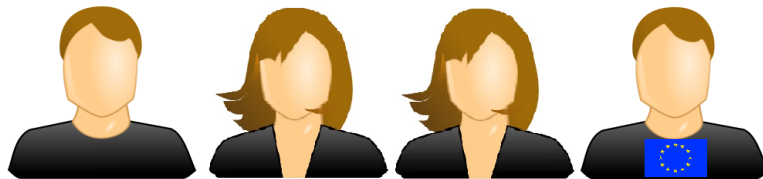
Some facts about the Legislative Observatory

- It is a European parliament's database containing over 12,000 procedures files
- It currently attracts on average more than 30,000 monthly visitors from EU countries and other countries from all over the world.

Average of monthly visitors



- Many users are regular visitors, consulting the site several times a month or saving it among their favorites.
- Nearly three quarters of all users are external to the European Parliament.



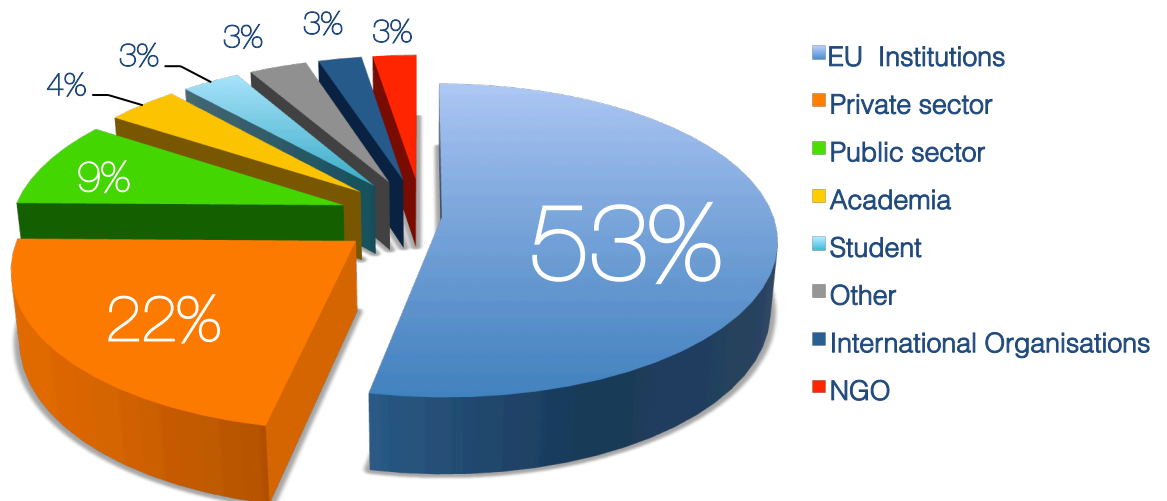
- More than 90% of subscribed users (signed up to "My Observatory") are external to the EU Institutions.

The survey

It was carried out between 10 April and 24 May 2013; it gathered information on users' priorities and gave them an opportunity to provide their feedback.
The main findings are as follows:

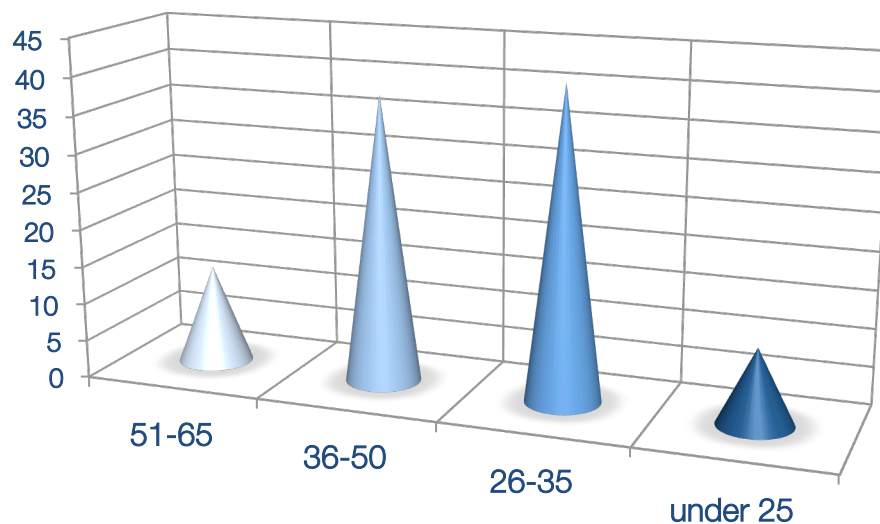
- The Legislative Observatory is used by specialists and serves a wide category of people not only inside the Institutions but outside the Institutions as well, such as lobbyists (one out of nine respondents works for consultancies), journalists, academics, students, lawyers, administrative officials, researchers.

Professional background of respondents



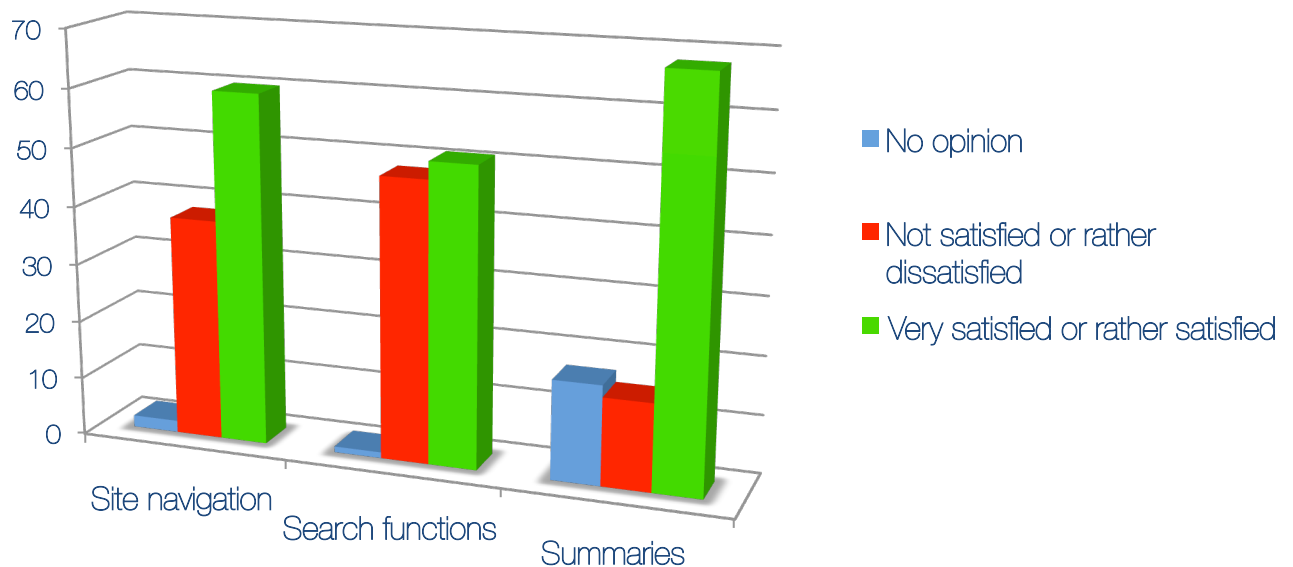
- It is particularly used by younger age groups (more than half of respondents are under 35 years old).

Respondents' age



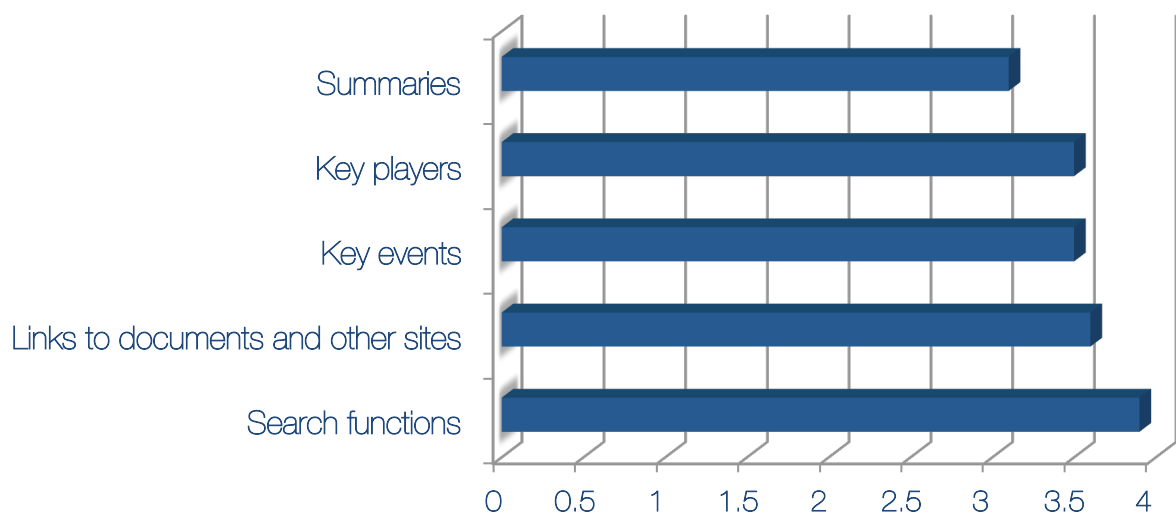
- The majority of respondents are satisfied with the summaries contained in the procedure files (68%), the site navigation (60%) and the search functions (51%).

Level of satisfaction with regard to



- The search engine is the site's most important feature; the site is also seen as source of official documentation and summaries.

What is more important for the users?



- The main concerns of the respondents are:
 - improvement of the search functions (75% of respondents wishing to see improvements in this respect)
 - inclusion of as much information as possible in the procedure files (60%), and
 - further simplification of the site navigation (43%).
- A smartphone application or a mobile version of the site would be welcomed (30% of total respondents; of these, 52% are smartphone and/or tablet users).

Thank you for your participation!